



Ministry of Jal Shakti,
Department of Water
Resources, River
Development and Ganga
Rejuvenation,
Government of India



जल शक्ति मंत्रालय,
जल संसाधन विभाग,
नदी विकास एवं गंगा
संरक्षण विभाग,
भारत सरकार



CENTRAL WATER AND POWER RESEARCH STATION, PUNE - 411 024

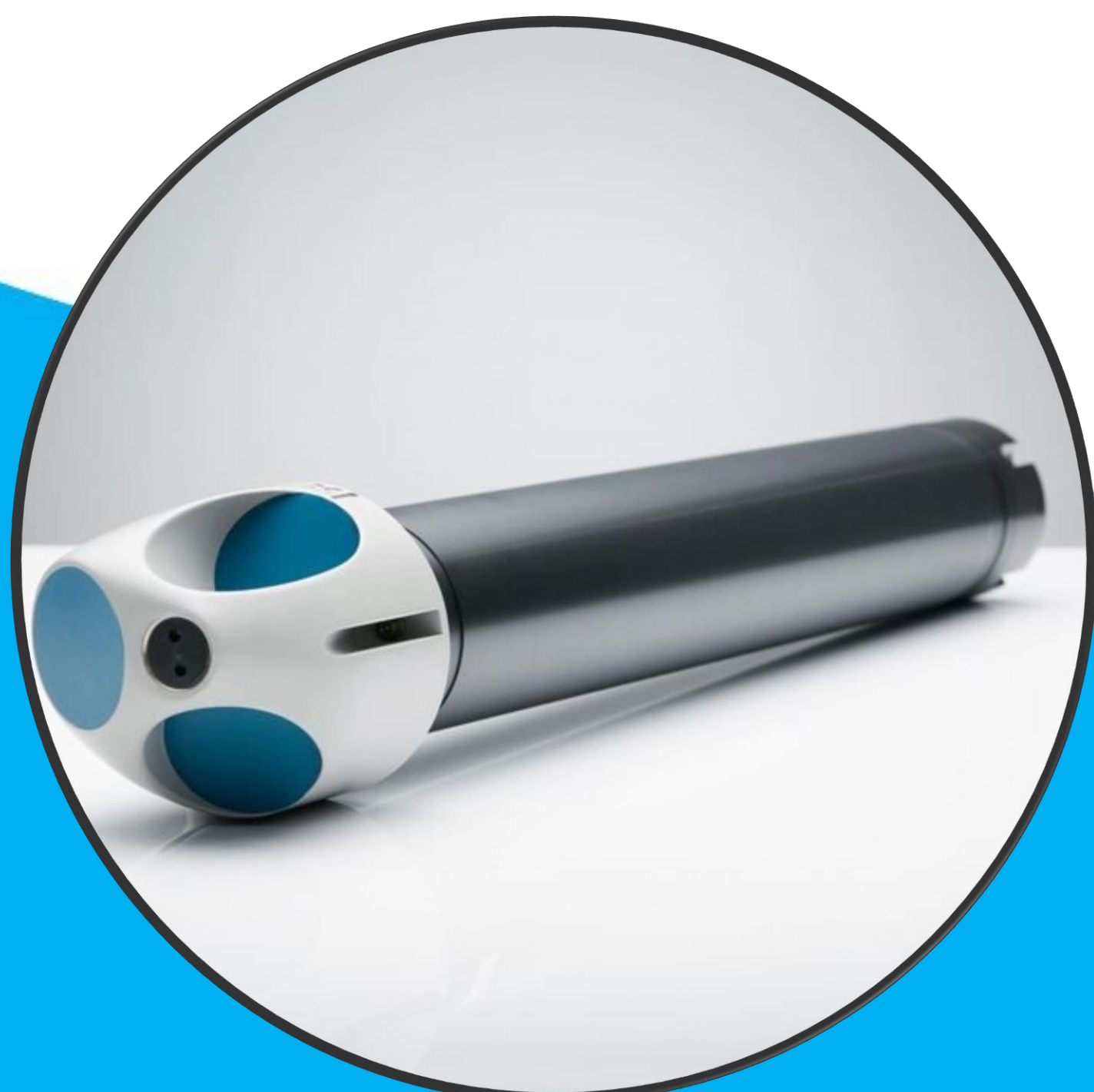
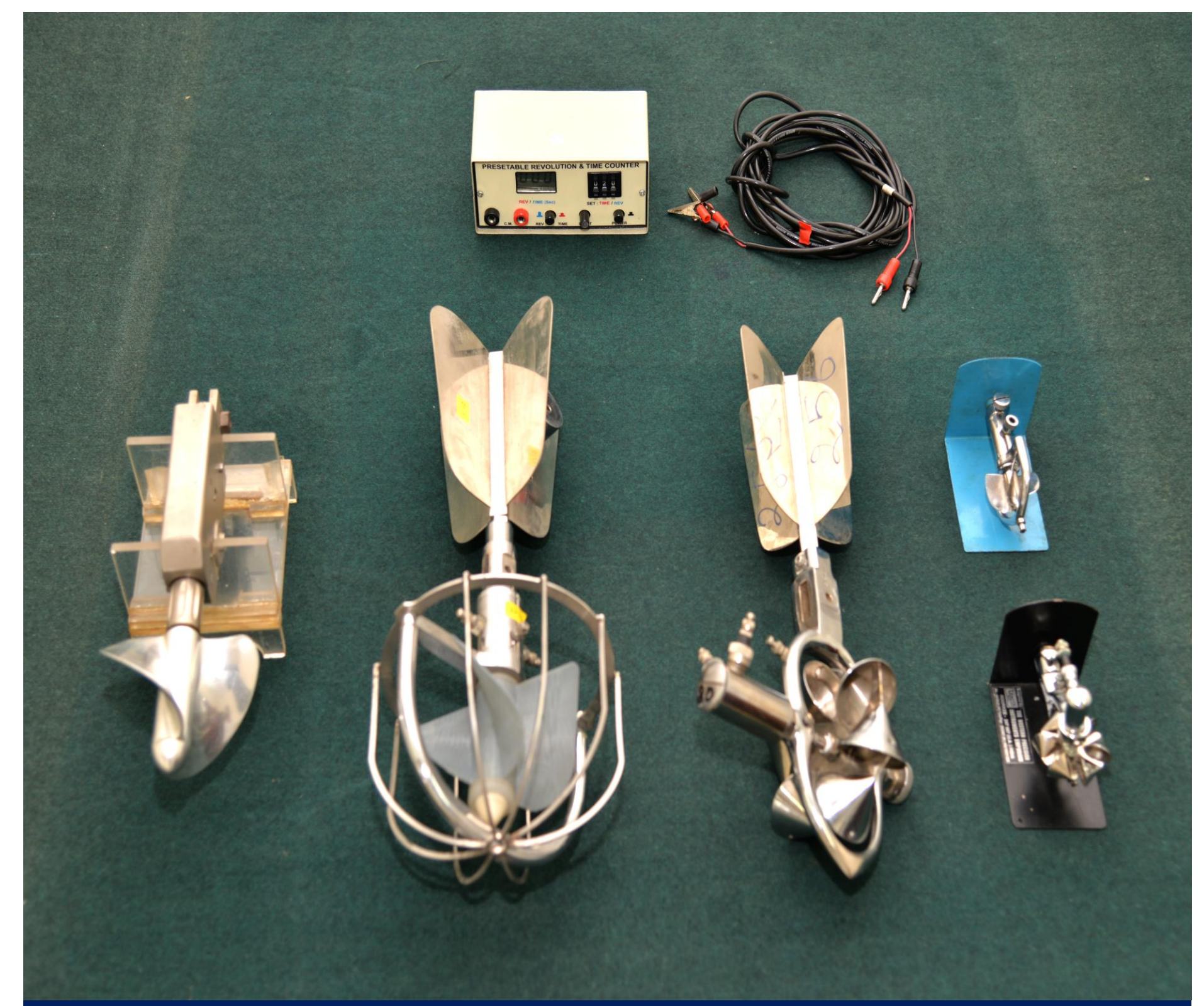
CURRENT METER CALIBRATION & TESTING FACILITY

CALIBRATE & TEST

- ✓ Cup, Propeller and Pigmy Type Current Meter
- ✓ Paddle Wheel, ADCP, Electromagnetic, Non-contact Velocity Type Current Meter
- ✓ Non-contact Water Level Sensors

Unique features

- Calibration as per ISO 3455 and IS 13371
- Calibration Range: 0.01-7.5 m/s with accuracy of 0.05%
- Drag force evaluation for various size of water bodies



Contact: Shri G. C. Sahoo, Scientist-D & In charge Current Meter Calibration Facility

Phone: 020 2410 3210/3504/3558

Email: director@cwprs.gov.in / sahoo.gc@gov.in / cmc-division@cwprs.gov.in